



STRUCTURAL ENGINEERING

QUARTERLY JOURNAL OF
INDIAN SOCIETY
OF
STRUCTURAL ENGINEERS

ISSE

VOLUME 14-3

July-Aug-Sept-2012

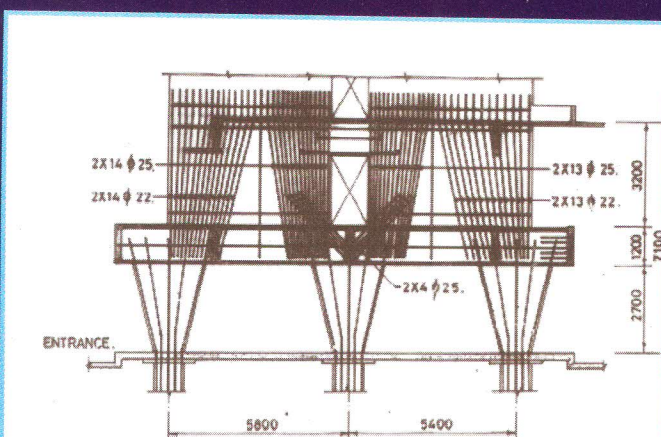
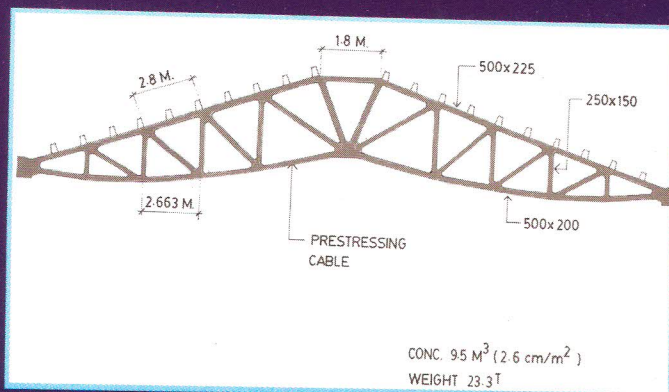


FIG.9B: TYPICAL REINFORCEMENT DETAILS OF SHEARWALL RESTING ON STILTS

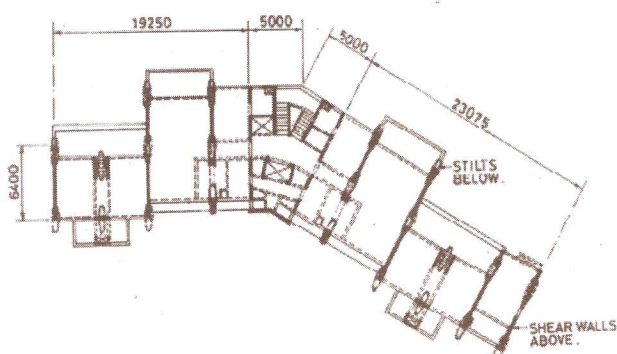


FIG.9A: TYPICAL FLOOR FRAMING - 22 STOREYED APARTMENT BUILDING.



**IMPORTANCE OF APPROXIMATE METHODS IN ANALYSIS
AND DESIGN OF STRUCTURES.**

(See Page 3)

LET US BUILD A STRONG STRUCTURE OF INDIAN SOCIETY